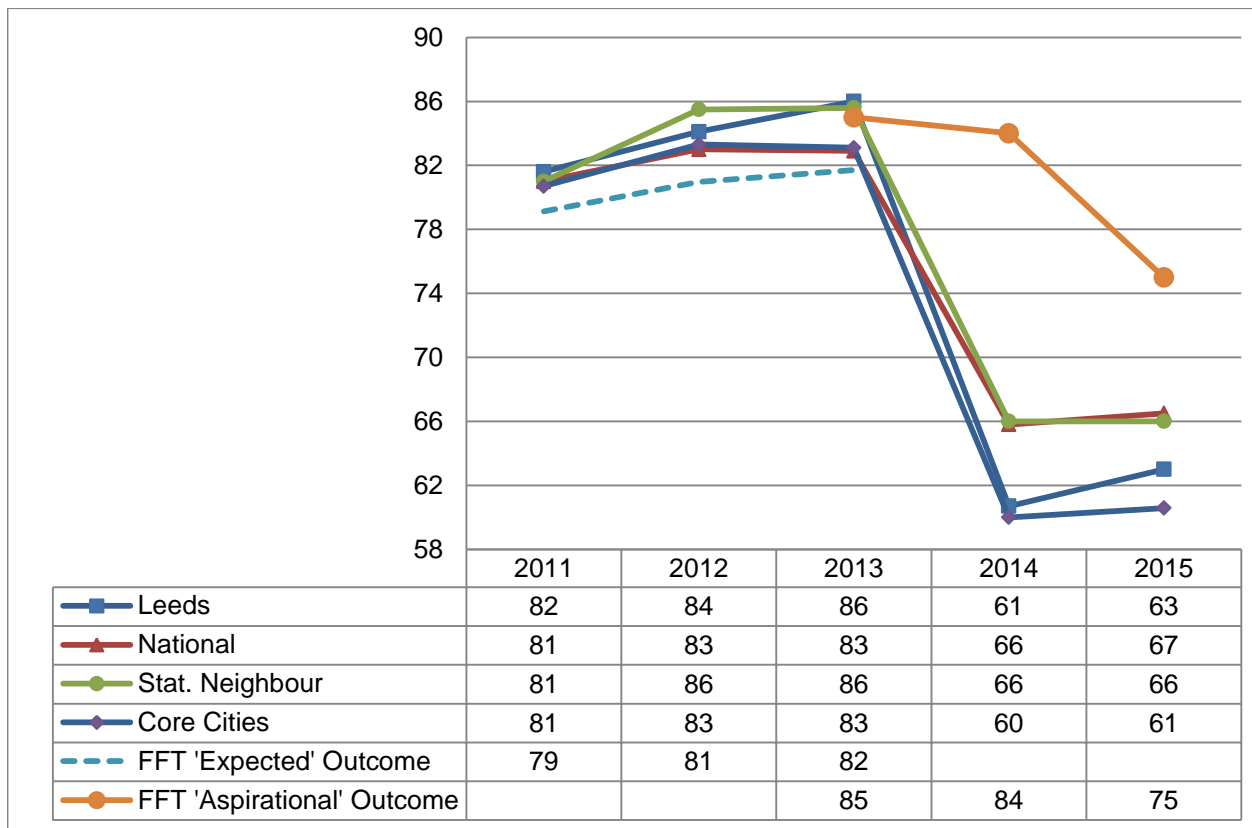


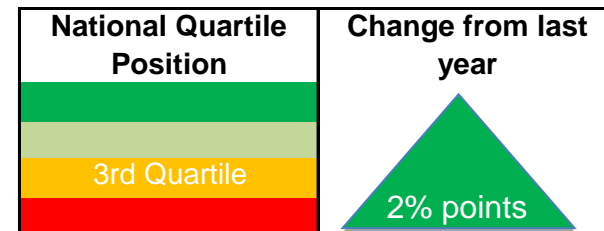
2014-15, Key Stage 4 - Learning Outcomes Dashboards

Dashboards	Changes Since Previous Version
Percentage of pupils achieving 5 A*-C at GCSE	Dashboard Updated
Percentage of pupils achieving 5 A*-C including English and Maths at GCSE	Dashboard Updated
Percentage of pupils achieving 5 A*-G at GCSE	Dashboard Updated
Percentage of pupils achieving the English Baccalaureate	Dashboard Updated
Percentage of no passes at GCSE	Dashboard Updated
Percentage of pupils making expected progress between Key Stage 2 and 4 in English	Dashboard Updated
Percentage of pupils making expected progress between Key Stage 2 and 4 in Maths	Dashboard Updated
Capped Average Point Score Per Pupil	Dashboard Updated
Percentage of schools not reaching the floor standard	Dashboard Updated

2014-15, Key Stage 4 - Percentage of pupils achieving 5 A*-C at GCSE



England Rank	112/151
--------------	---------



Key Issues: Performance in Leeds had improved by two percentage points and the gap between Leeds and the national is now four percentage points. Leeds' performance is behind the statistical neighbour average by three percentage points but ahead of core cities by two percentage points.

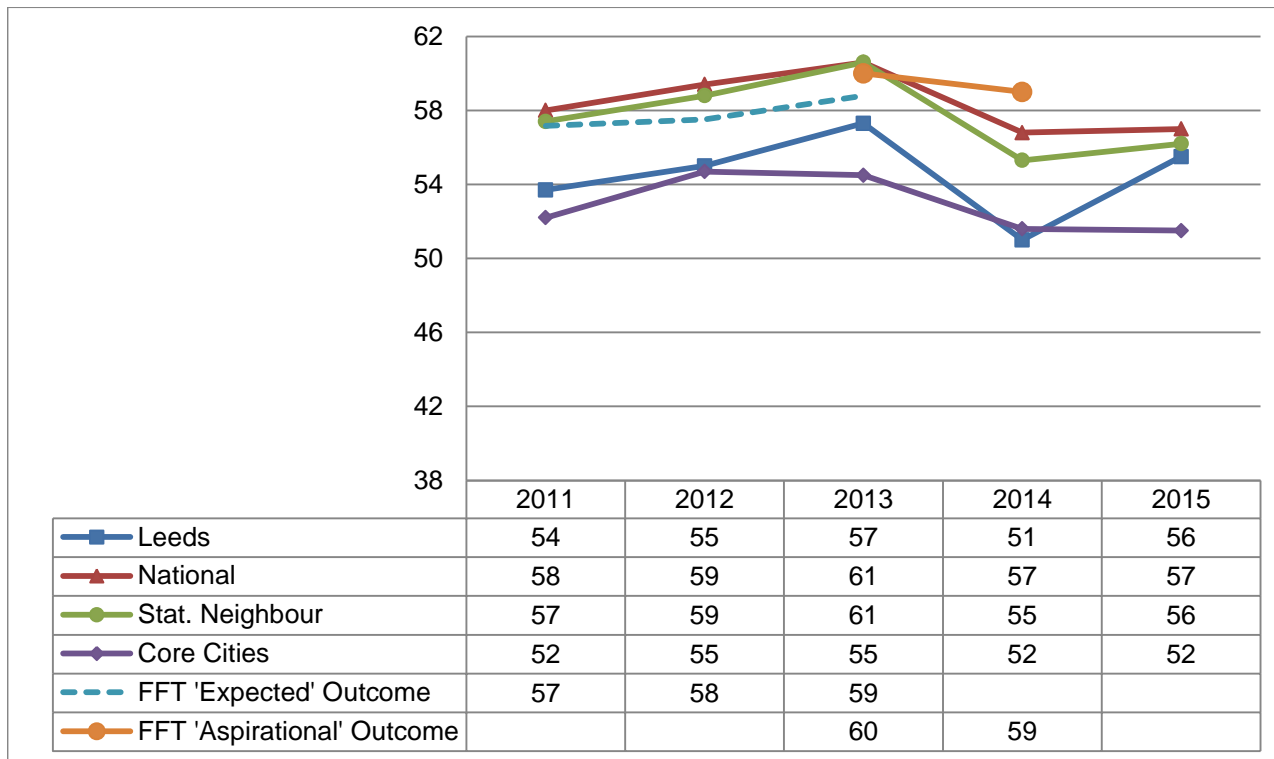
Data Status: Revised

Data Source: DfE Statistical First Release SFR 01 2016

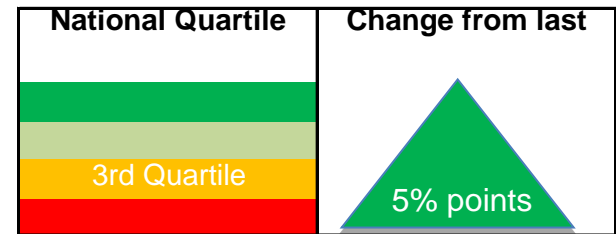
Data Notes: It is not possible to compare 2013/14 results with previous years. It is also important to note the statistical neighbour list for Leeds was revised in October 2014 so comparisons need to be made with caution.



2014-15, Key Stage 4 - Percentage of pupils achieving 5 A*-C including English and Maths at GCSE



England Rank	97/151
--------------	--------



Key Issues: Leeds had improved by five percentage points bringing performance more in line with the national average. Leeds performance is now in line with statistical neighbours and ahead of the core cities' average by four percentage points.

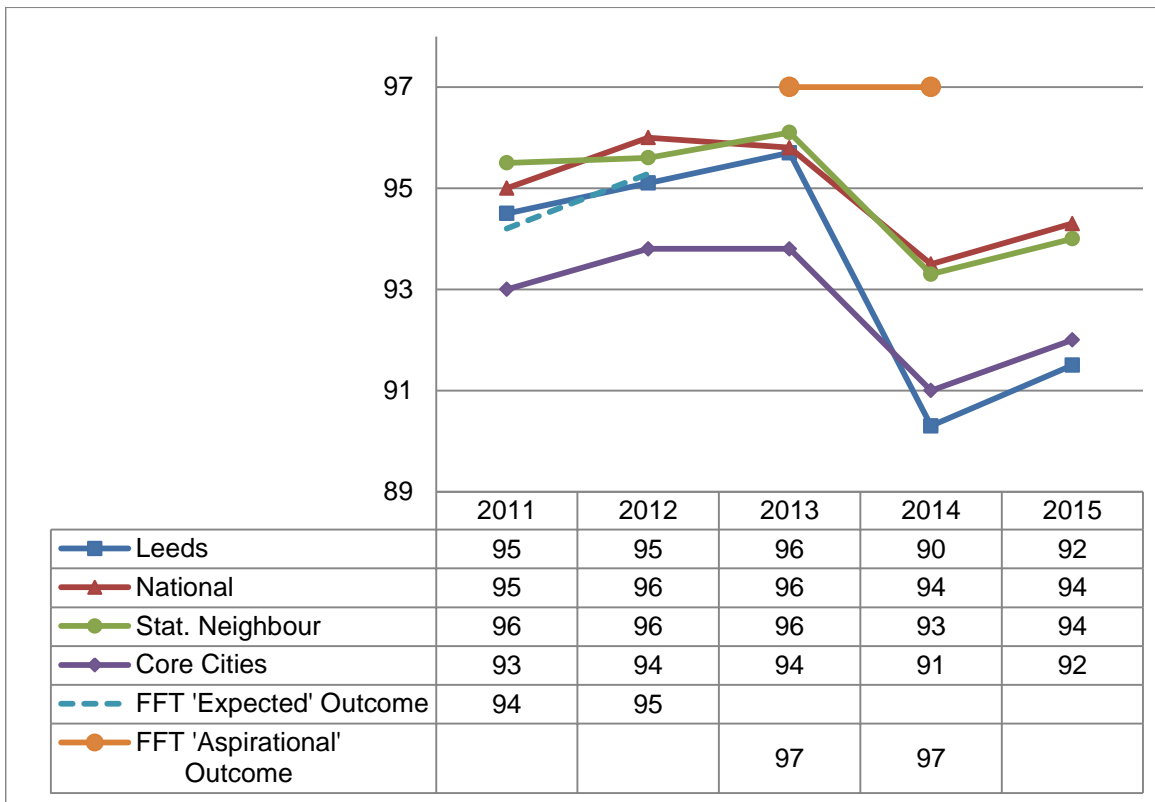
Data Status: Revised

Data Source: DfE Statistical First Release SFR 01 2016

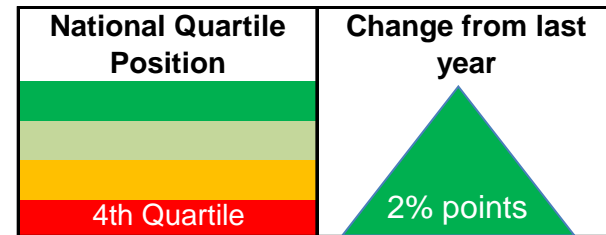
Data Notes: It is not possible to compare 2013/14 results with previous years. It is also important to note the statistical neighbour list for Leeds was revised in October 2014 so comparisons need to be made with caution.



2014-15, Key Stage 4 - Percentage of pupils achieving 5 A*-G at GCSE



England Rank	Equal 143/151
--------------	---------------



Key Issues: Performance in Leeds has improved by two percentage points where as national performance has remained static. Performance is in line with core cities but behind that of statistical neighbours by two percentage points.

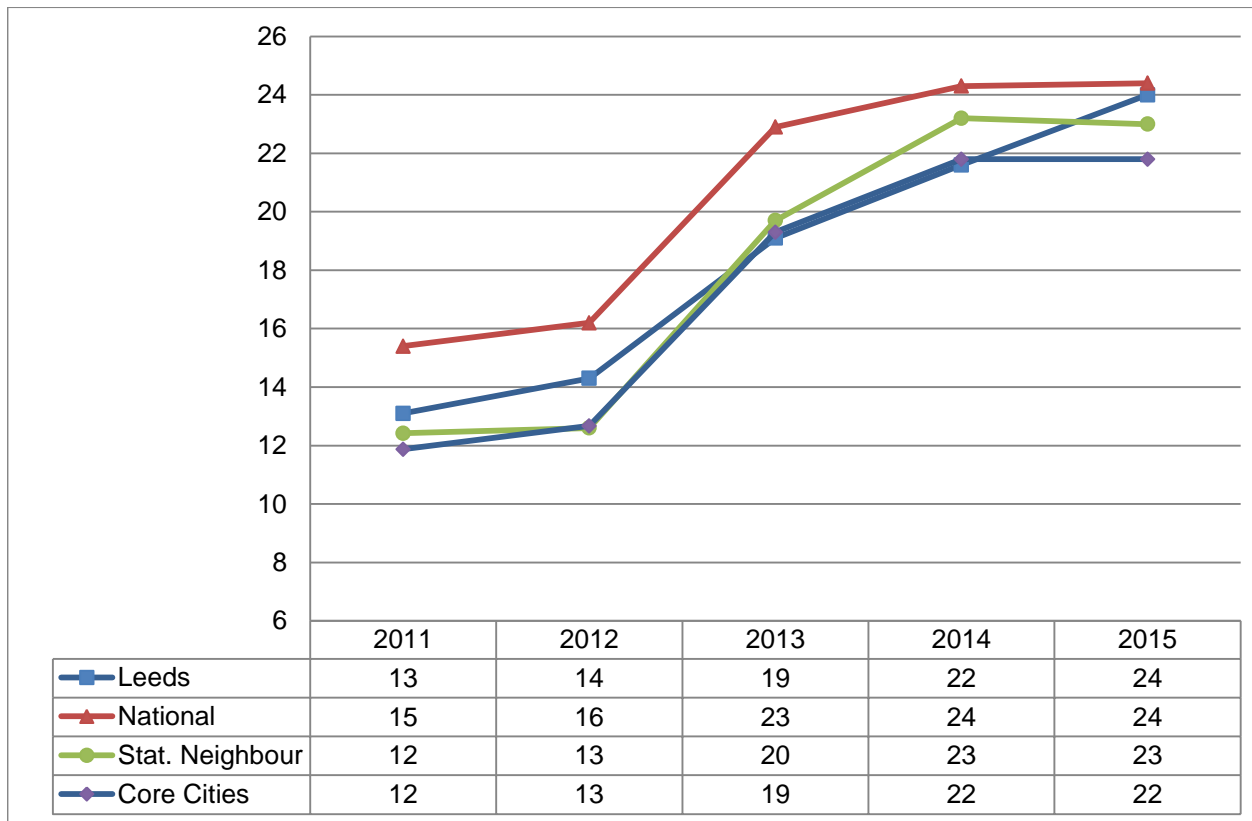
Data Status: Revised

Data Source: DfE Statistical First Release SFR 01 2016

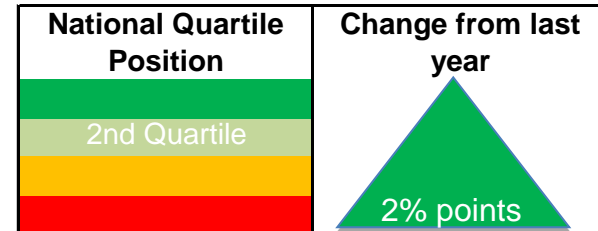
Data Notes: It is not possible to compare 2013/14 results with previous years. It is also important to note the statistical neighbour list for Leeds was revised in October 2014 so comparisons need to be made with caution.



2014-15, Key Stage 4 - Percentage of pupils achieving the English Baccalaureate



England Rank	Equal 69/149
--------------	--------------



Key Issues: Performance in Leeds has improved by two percentage points and is now in line with national average and ahead of statistical neighbour and core cities performance by one and two percentage points respectively.

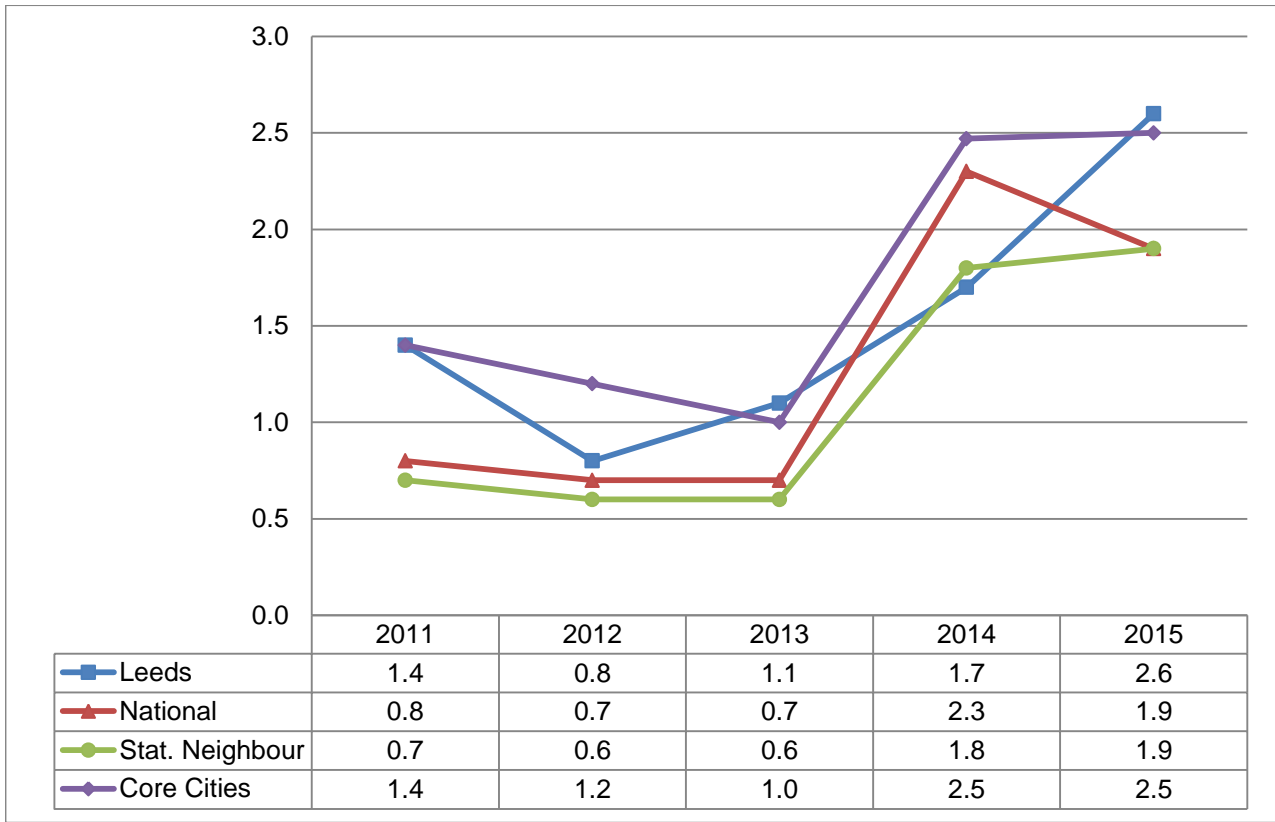
Data Status: Revised

Data Source: DfE Statistical First Release SFR 01 2016

Data Notes: The EBacc, which was introduced in 2010, covers achievement in GCSE (or accredited iGCSE) English, mathematics, sciences, a language (including Latin, classical Greek or ancient Hebrew) and a humanities subject. It is not possible to compare 2013/14 results with previous years. It is also important to note the statistical neighbour list for Leeds was revised in October 2014 so comparisons need to be made with caution.



2014-15, Key Stage 4 - Percentage of no passes at GCSE



England Rank	Equal 143/149
---------------------	---------------

National Quartile Position	Change from last year

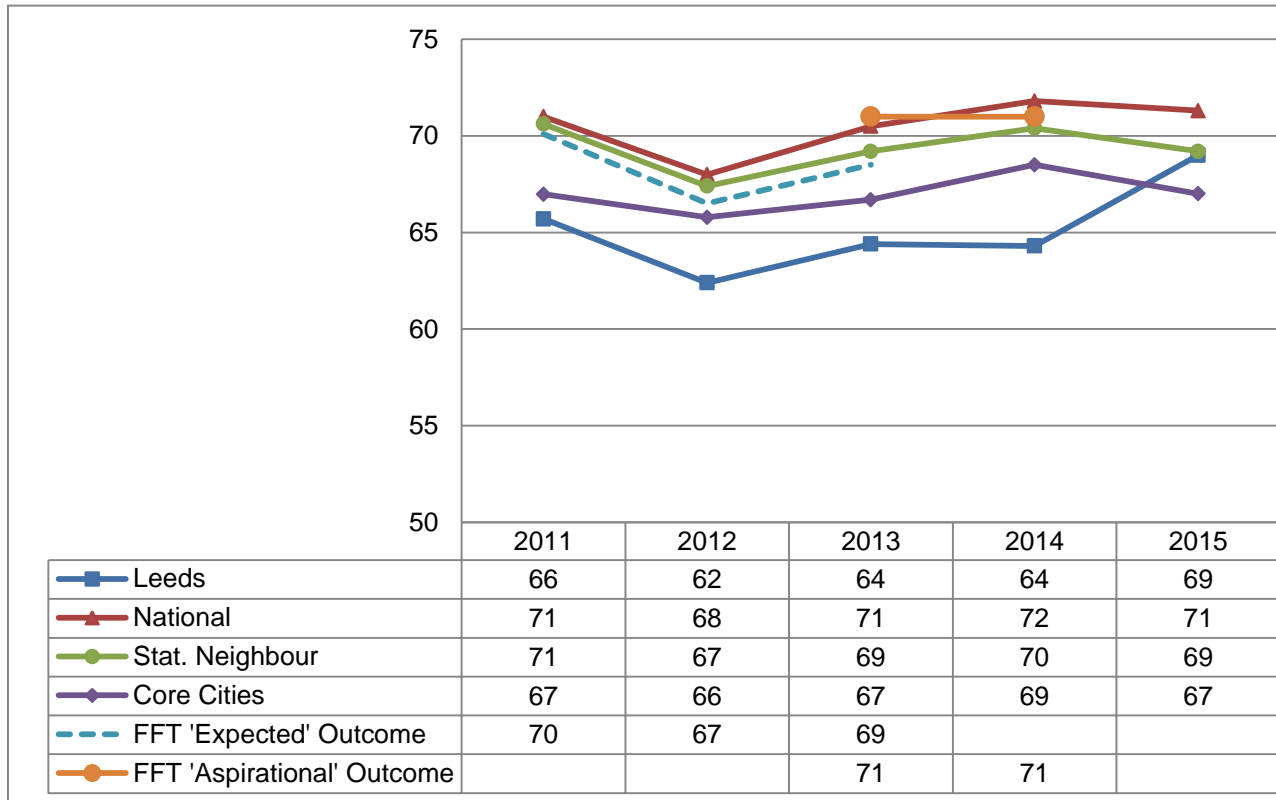
Key Issues: The percentage of Leeds pupils having no passes at GCSE has increased by 0.9 percentage points to 2.6 percentage points. National performance has fallen slightly to 1.9 percentage points.

Data Status: Revised
 Data Source: DfE Statistical First Release SFR 01 2016

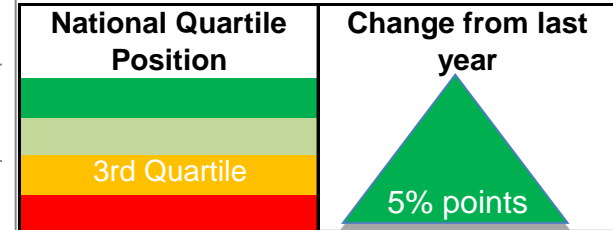
Data Notes: It is not possible to compare 2013/14 results with previous years. It is also important to note the statistical neighbour list for Leeds was revised in October 2014 so comparisons need to be made with caution.



2014-15 - Percentage of pupils making expected progress between Key Stage 2 and 4 in English



England Rank	99/149
--------------	--------



Key Issues: Expected progress in English has improved by five percentage points and is now behind the national average by two percentage points. Leeds' performance is in line with statistical neighbours and ahead of the core cities average by two percentage points.

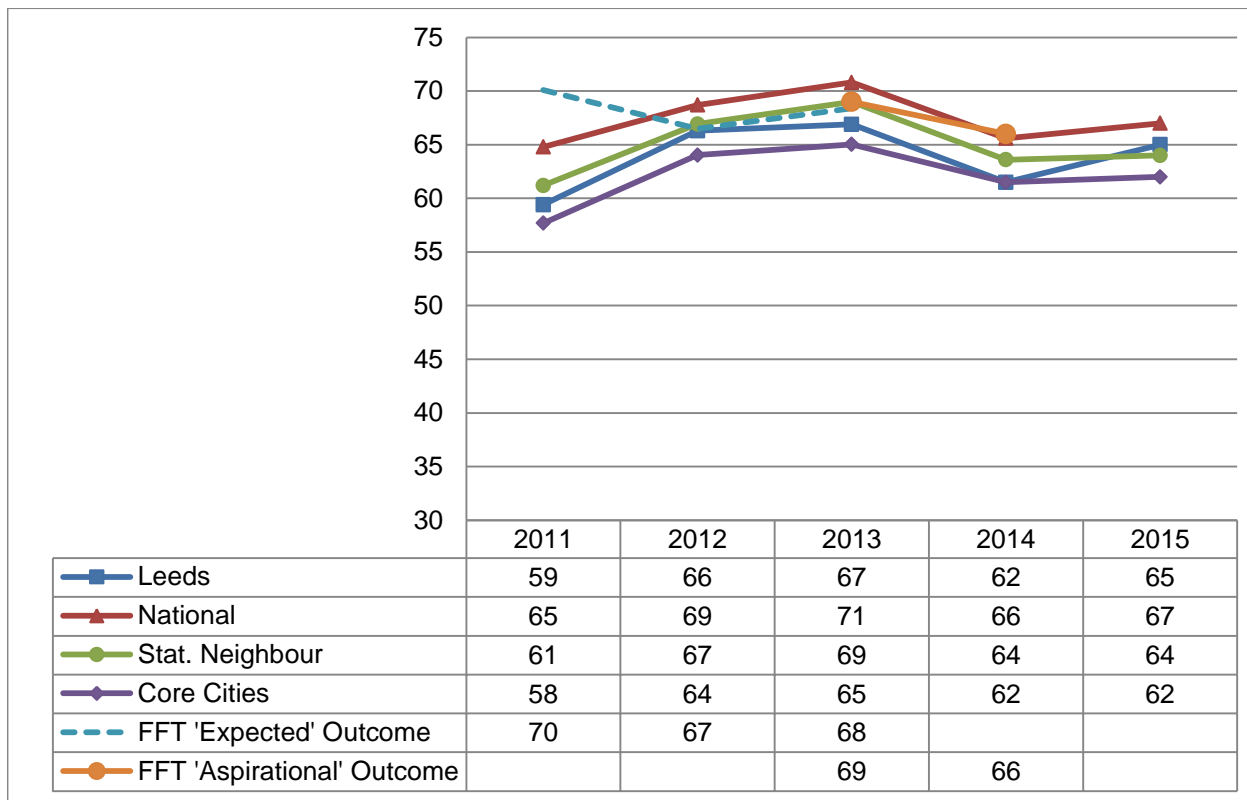
Data Status: Revised

Data Source: DfE Statistical First Release SFR 01 2016

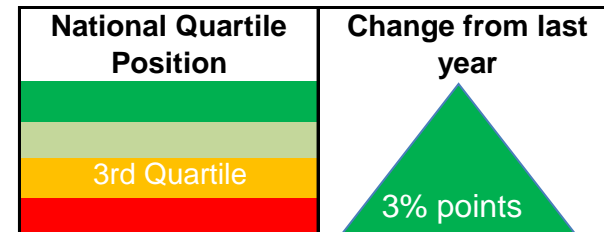
Data Notes: It is not possible to compare 2013/14 results with previous years. It is also important to note the statistical neighbour list for Leeds was revised in October 2014 so comparisons need to be made with caution.



2014-15 - Percentage of pupils making expected progress between Key Stage 2 and 4 in Maths



England Rank	95/152
--------------	--------



Key Issues: Performance in Leeds has improved by three percentage points and is ahead of the statistical neighbour and core cities figure. However, when compared to the national average, Leeds is behind by two percentage points.

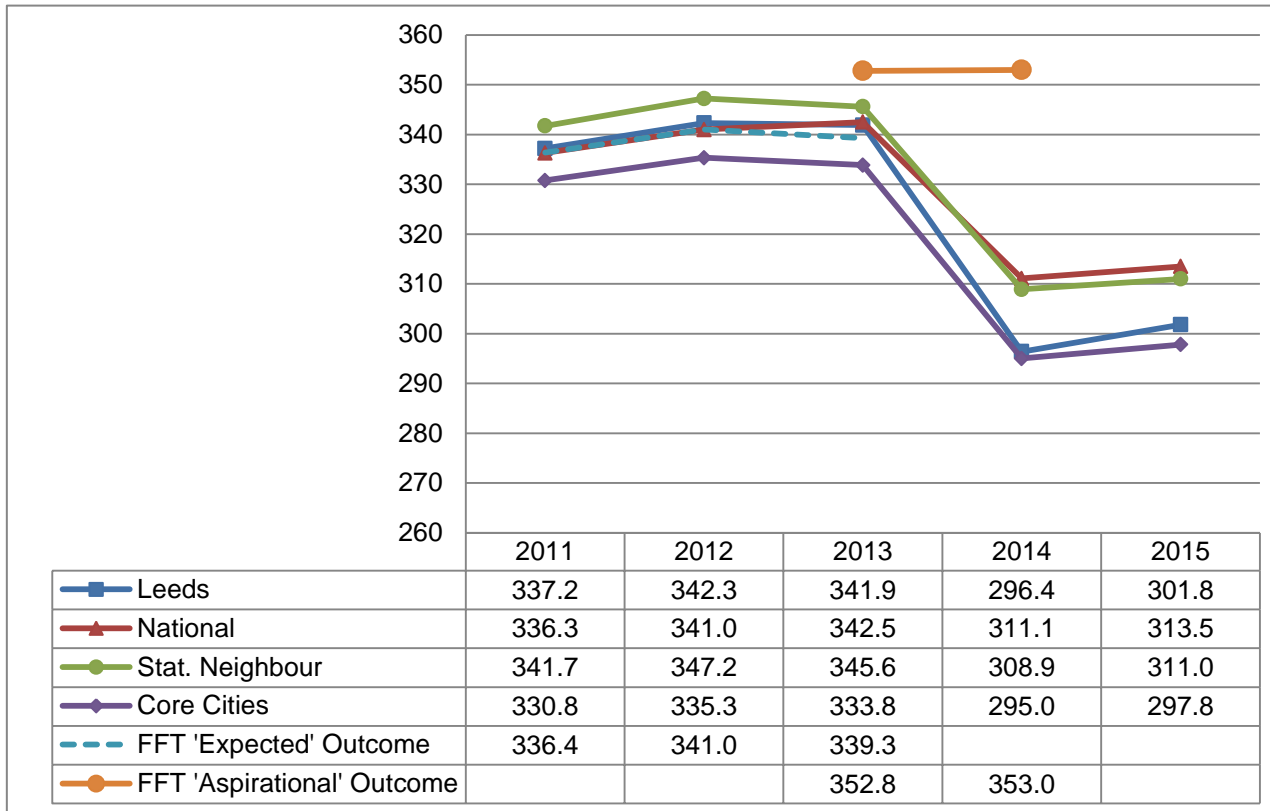
Data Status: Revised

Data Source: DfE Statistical First Release SFR 01 2016

Data Notes: It is not possible to compare 2013/14 results with previous years. It is also important to note the statistical neighbour list for Leeds was revised in October 2014 so comparisons need to be made with caution.



2014-15 - Key Stage 4 Capped Average* Point Score Per Pupil



England Rank	121/151
---------------------	---------

National Quartile Position	Change from last year
<p style="text-align: center;">4th Quartile</p>	<p style="text-align: center;">5.4 points</p>

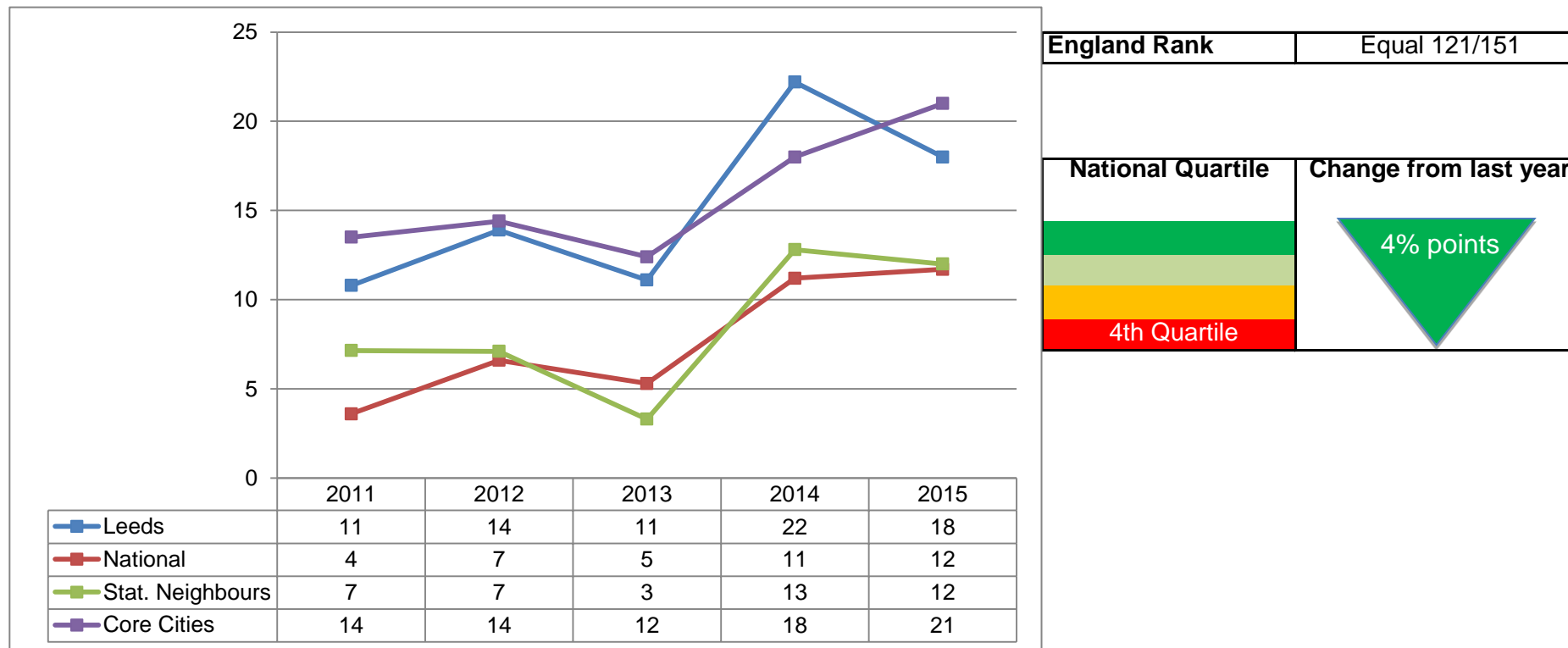
Key Issues: Performance in Leeds has improved by 5.4 points. However, the Leeds' figure is below that of the national and statistical neighbour average.

Data Status: Revised
 Data Source: DfE Statistical First Release SFR 01 2016

Data Notes: *Average capped point scores are calculated using the best 8 GCSE and equivalent results. It is not possible to compare 2013/14 results with previous years. It is also important to note the statistical neighbour list for Leeds was revised in October 2014 so comparisons need to be made with caution.



2014-15, Key Stage 4 - Percentage of schools not reaching the floor standard*



Key Issues: Performance had improved in Leeds by four percentage points since 2014 with 18 per cent of Leeds' schools not reaching the floor standard compared to 22 per cent the previous year. Leeds' performance is behind that of the national and statistical neighbour average by six percentage points but ahead of the core cities average by three percentage points.

Data Status: Revised

Data Source: DfE Statistical First Release SFR 01 2016.

Data Notes: * A school is below the 5+ A*-C and expected progress floor standard if less than 40% of pupils achieve 5+ A*-C including English and mathematics and the expected progress between key stage 2 and key stage 4 is less than the median of 73% in English and less than the median of 68% in mathematics. The figures do not include schools that have opted in to the new key stage 4 accountability system and floor standards. Please note it is not possible to compare 2013/14 results with previous years.

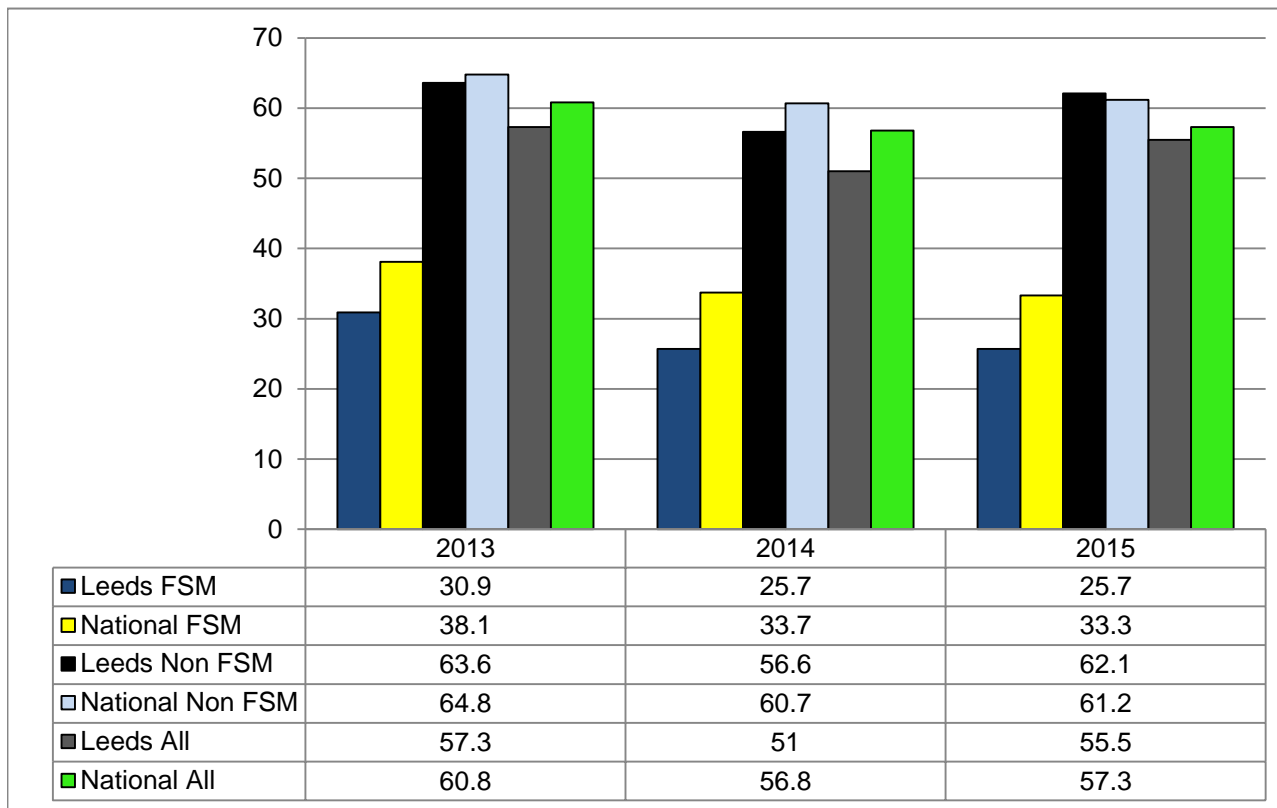


2013-14, Key Stage 4 - Learning Outcomes Dashboards - Pupil Groups

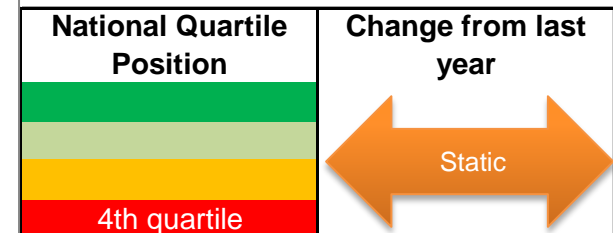
Dashboards	Changes Since Previous Version
Percentage of pupils achieving 5 A*-C at GCSE including English and Maths - FSM	New dashboard added
Percentage of pupils achieving 5 A*-C at GCSE including English and Maths - EAL	New dashboard added
Percentage of pupils achieving 5 A*-C at GCSE including English and Maths - SEN provision	New dashboard added
Percentage of pupils achieving 5 A*-C at GCSE including English and Maths - Ethnicity	New dashboard added
Percentage of pupils achieving 5 A*-C at GCSE including English and Maths - Gender	New dashboard added
Percentage of pupils achieving 5 A*-G at GCSE - FSM	New dashboard added
Percentage of pupils achieving 5 A*-G at GCSE - EAL	New dashboard added
Percentage of pupils achieving 5 A*-G at GCSE - SEN provision	New dashboard added
Percentage of pupils achieving 5 A*-G at GCSE - Ethnicity	New dashboard added
Percentage of pupils achieving 5 A*-G at GCSE - Gender	New dashboard added

Please note: A separate Dashboard has been produced for CLA

2013-14, Key Stage 4 - Percentage of pupils achieving 5 A*-C at GCSE including English and Maths - FSM



England Rank	Equal 130/149
--------------	---------------

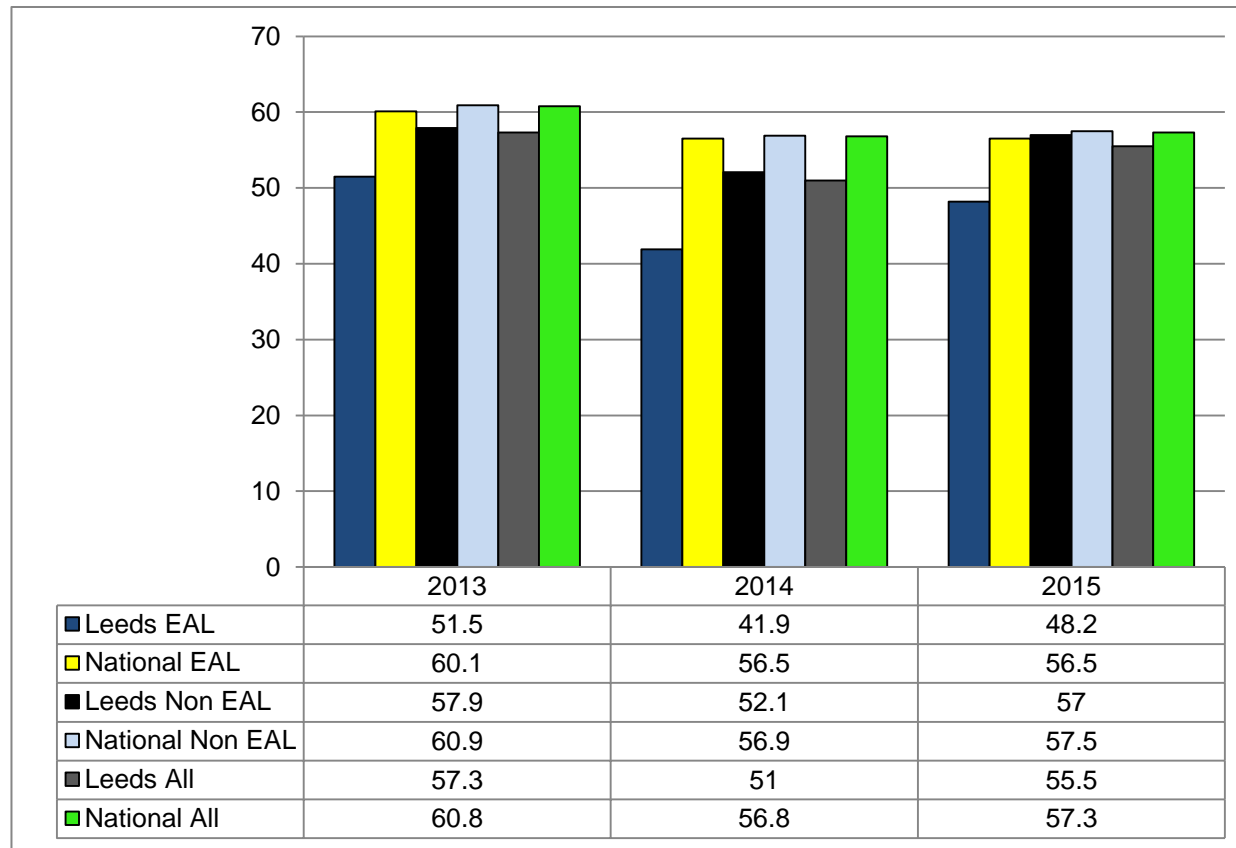


Key Issues: Performance of pupils who are FSM eligible has remained static in 2015 with 26 per cent of pupils achieving 5 A*-C including English and maths. When compared to national performance, Leeds FSM is behind by seven percentage points (a decrease of one percentage point since 2014). The gap in performance between Leeds FSM and non FSM has increased by five percentage points to 36 per cent.

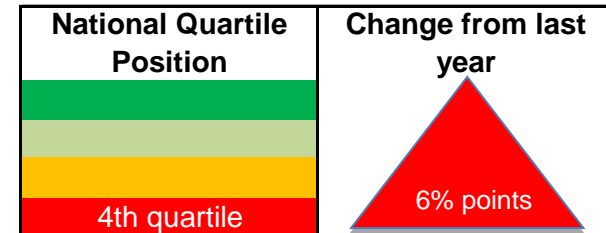
Data Status: Final
 Data Source: DfE Statistical First Release SFR 01 2016
 Data Notes: 2013/14 results are not comparable with previous years.



2013-14, Key Stage 4 - Percentage of pupils achieving 5 A*-C at GCSE including English and Maths - English as an additional language (EAL)



England Rank	123/146
--------------	---------

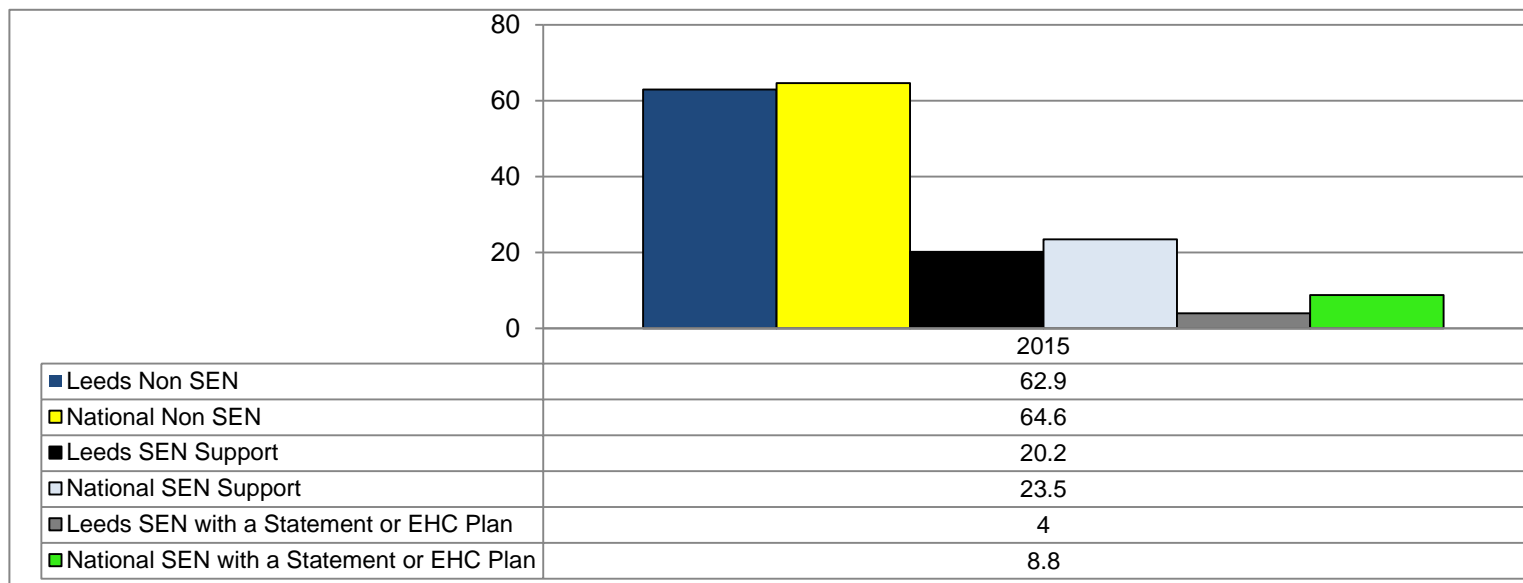


Key Issues: Performance of pupils who are EAL has increased by six percentage points, narrowing the gap with the national figure to nine percentage points. The gap in performance between EAL pupils and non EAL pupils in Leeds is nine percentage points; a decrease of one percentage point since 2014.

Data Status: Final
 Data Source: DfE Statistical First Release SFR 01 2016
 Data Notes: 2013/14 results are not comparable with previous years.



2013-14, Key Stage 4 - Percentage of pupils achieving 5 A*-C at GCSE including English and Maths - SEN provision



	England Rank	National Quartile Position	Change from last year
Non SEN	89/149	3rd quartile	Not applicable
SEN Support	92/134	3rd quartile	Not applicable
SEN with a Statement or EHC Plan	Equal 128/143	4th quartile	Not applicable

Key Issues: Pupils who are identified as having SEN in Leeds do not perform as well as SEN pupils nationally. 20 per cent of pupils who are categorised as SEN Support achieve the benchmark compared to 24 per cent nationally. This gap is increased by one percentage point when looking at pupils who are SEN with a Statement or EHC Plan.

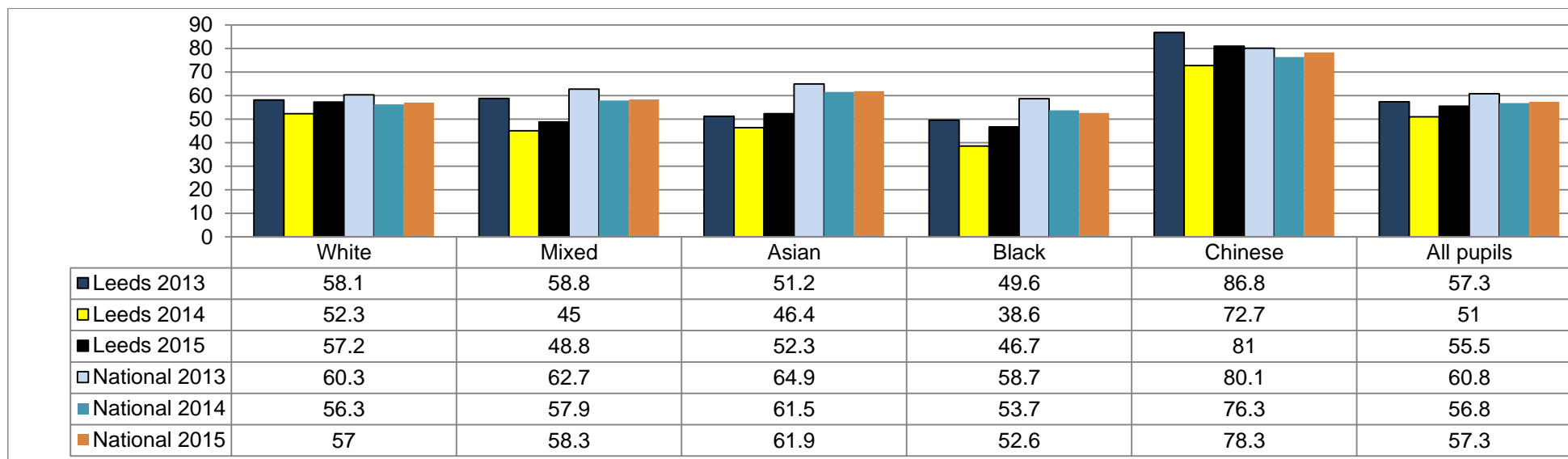
Data Status: Final

Data Source: DfE Statistical First Release SFR 01 2016

Data Notes: 2013/14 results are not comparable with previous years.



2013-14, Key Stage 4 - Percentage of pupils achieving 5 A*-C at GCSE including English and Maths - Ethnicity



	England Rank	National Quartile Position	Change from last year
White	70/151	2nd quartile	5% point ↑
Mixed	127/146	4th quartile	4% point ↑
Asian	128/142	4th quartile	6% point ↑
Black	93/127	3rd quartile	8% point ↑
Chinese	25/71	2nd quartile	8% point ↑

Key Issues: Performance has improved across all ethnic groups, with the biggest improvement of eight percentage points seen amongst the Black and Chinese groups.

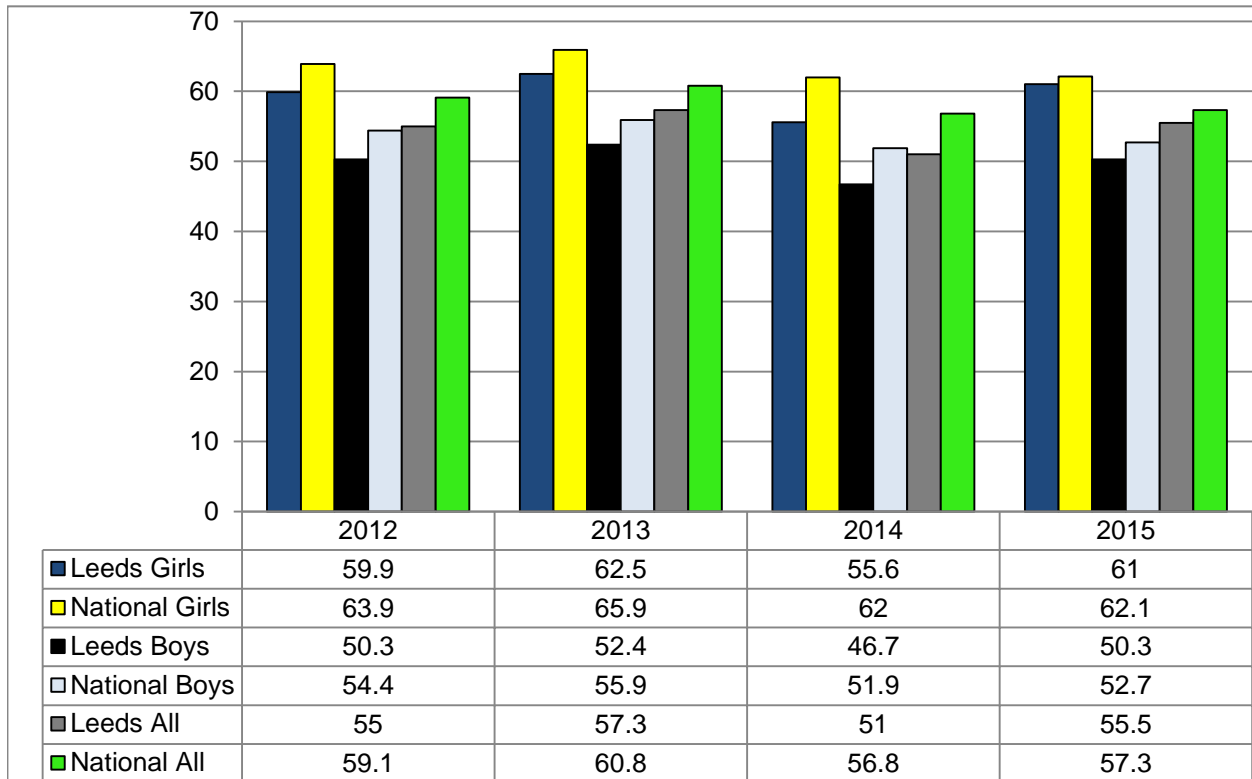
Data Status: Final

Data Source: DfE Statistical First Release SFR 01 2016

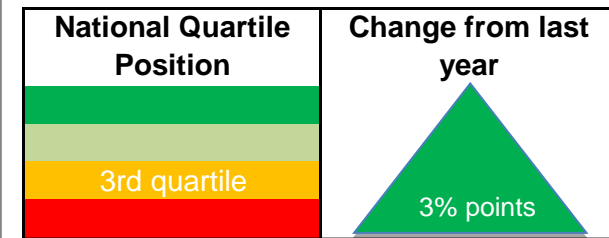
Data Notes: 2013/14 results are not comparable with previous years. For a more detailed breakdown of ethnicity groups please look at the report functions on RaiseOnline LA populated.



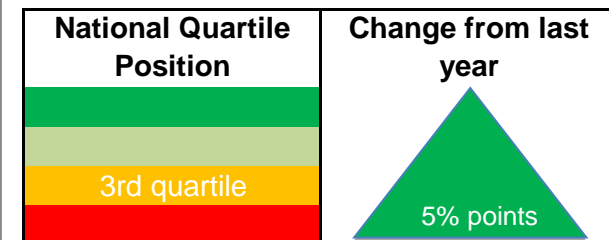
2013-14, Key Stage 4 - Percentage of pupils achieving 5 A*-C at GCSE including English and Maths - Gender



England Rank - Boys 100/149



England Rank - Girls Equal 90/149



Key Issues: Performance has improved for boys by three percentage points in 2015, narrowing the gap to the national figure to three percentage points. Performance of Leeds' girls has followed the same trajectory and improved by five percentage points, narrowing the gap to the national figure to one percentage point.

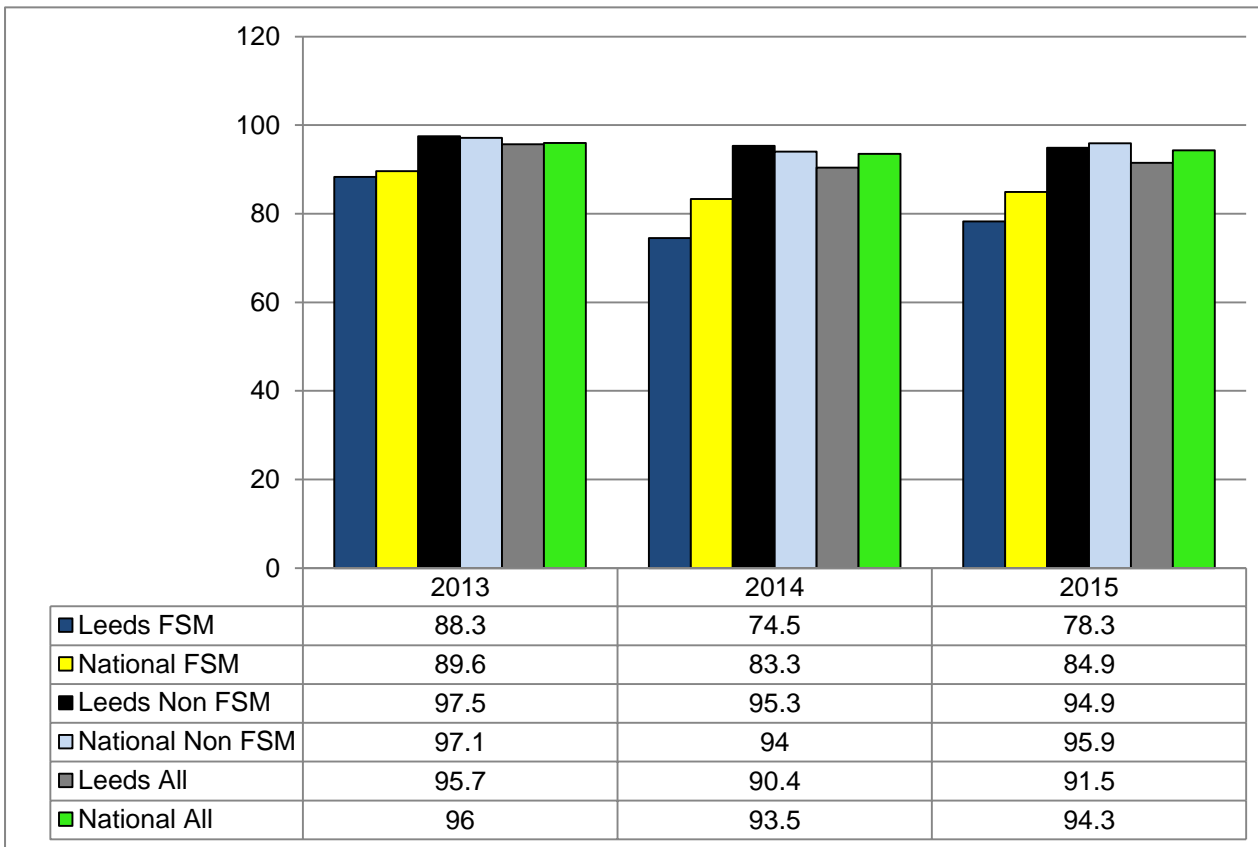
Data Status: Final

Data Source: DfE Statistical First Release SFR 01 2015

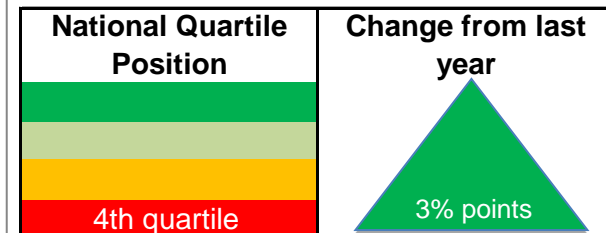
Data Notes: 2013/14 results are not comparable with previous years.



2013-14, Key Stage 4 - Percentage of pupils achieving 5 A*-G at GCSE - FSM



England Rank	138/143
--------------	---------



Key Issues: Performance of pupils who are FSM eligible has improved by three percentage points, however performance remains behind the national average by seven percentage points. The gap in performance between pupils who are FSM eligible in Leeds and those who aren't is 17 percentage points.

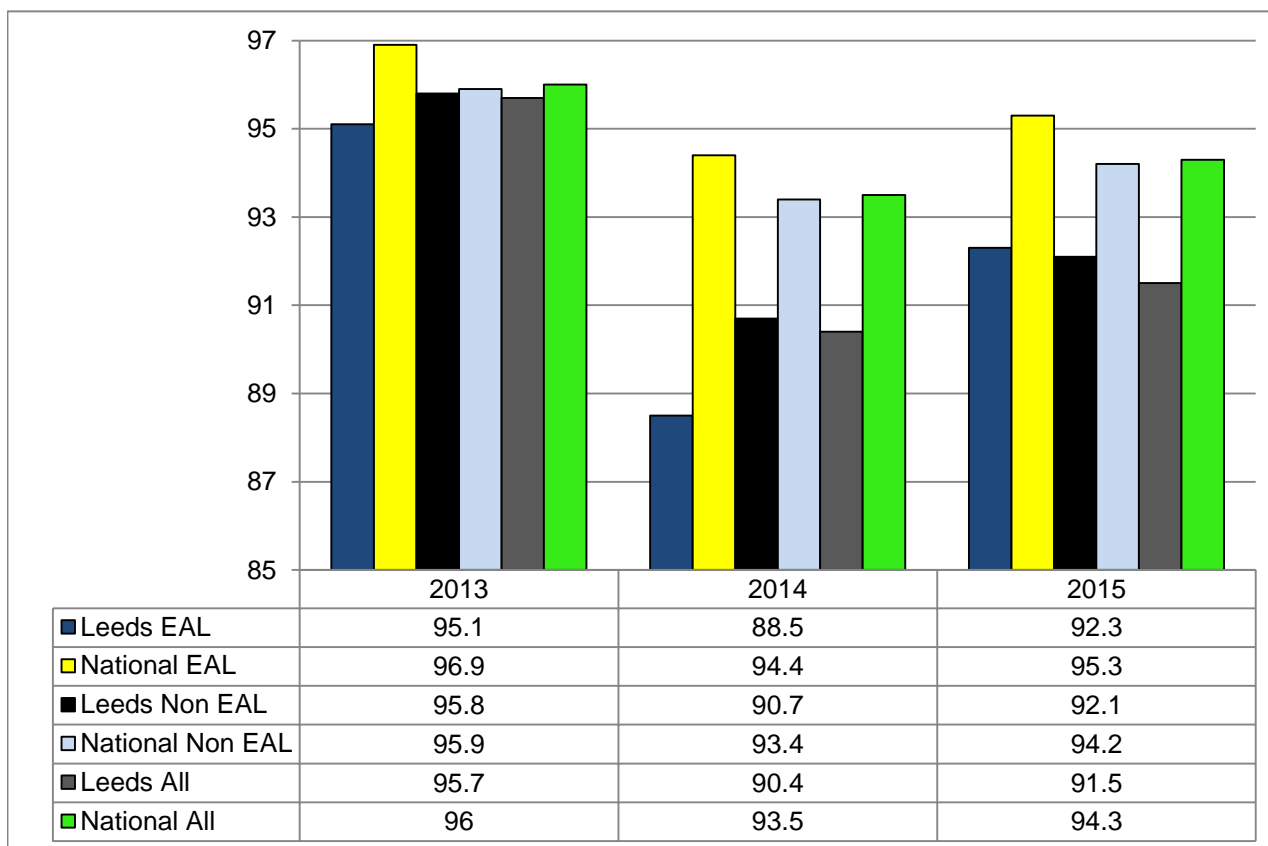
Data Status: Final

Data Source: DfE Statistical First Release SFR 01 2016

Data Notes: 2013/14 results are not comparable with previous years.



2013-14, Key Stage 4 - Percentage of pupils achieving 5 A*-G at GCSE - English as an additional language (EAL)



England Rank	109/119
--------------	---------

National Quartile Position	Change from last year

Key Issues: Performance of pupils who are EAL has increased by three percentage points, narrowing the gap to the national figure to three percentage points.

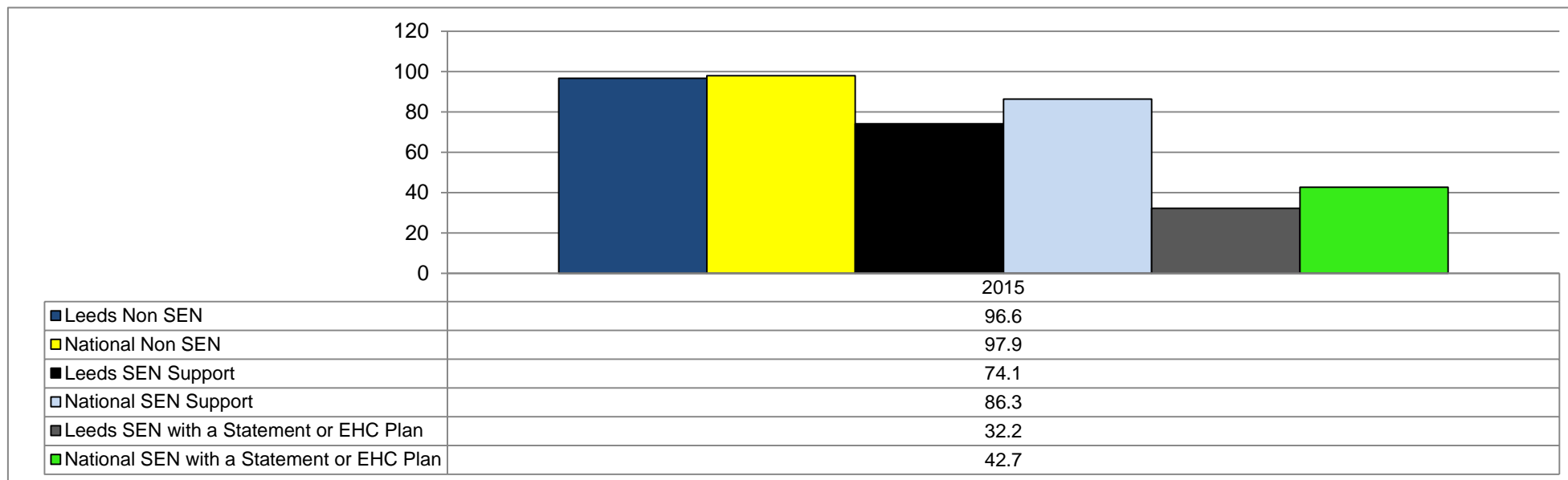
Data Status: Final

Data Source: DfE Statistical First Release SFR 01 2016

Data Notes: 2013/14 results are not comparable with previous years.



2013-14, Key Stage 4 - Percentage of pupils achieving 5 A*-G at GCSE - SEN provision



	England Rank	National Quartile Position	Change from last year
Non SEN	Equal 136/149	4th quartile	Not applicable
SEN Support	146/147	4th quartile	Not applicable
SEN with a Statement or EHC Plan	125/148	4th quartile	Not applicable

Key Issues: Pupils who are identified as having SEN in Leeds do not perform as well as SEN pupils nationally. 74 per cent of pupils who are identified as SEN Support achieve the benchmark compared to 86 per cent nationally and 32 per cent of pupils who are categorised as SEN with a Statement or EHC Plan compared to 43 per cent nationally.

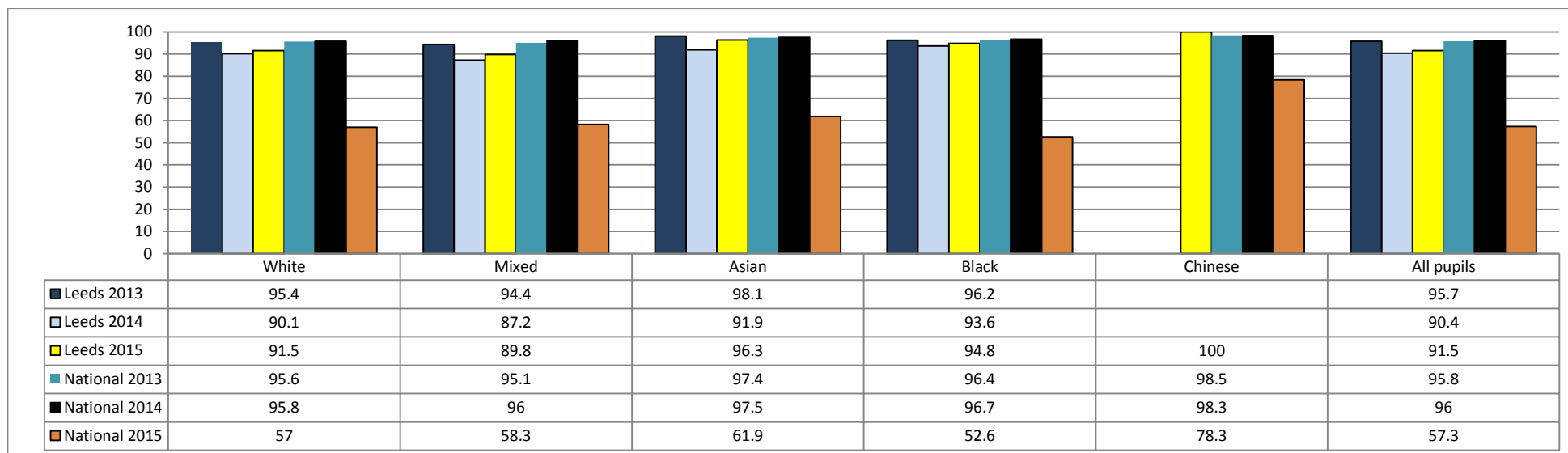
Data Status: Final

Data Source: DfE Statistical First Release SFR 01 2016

Data Notes: 2013/14 results are not comparable with previous years.



2013-14, Key Stage 4 - Percentage of pupils achieving 5 A*-G at GCSE



	England Rank	National Quartile Position	Change from last year
White	135/151	4th quartile	2 ↑
Mixed	Equal 114/126	4th quartile	3 ↑
Asian	Equal 73/114	3rd quartile	4 ↑
Black	Equal 70/98	3rd quartile	1 ↑
Chinese	Equal 1/85	1st quartile	unable to calculate due to suppression.

Key Issues: Performance has improved across all ethnic groups with the biggest improvement of four percentage points amongst the Asian group.

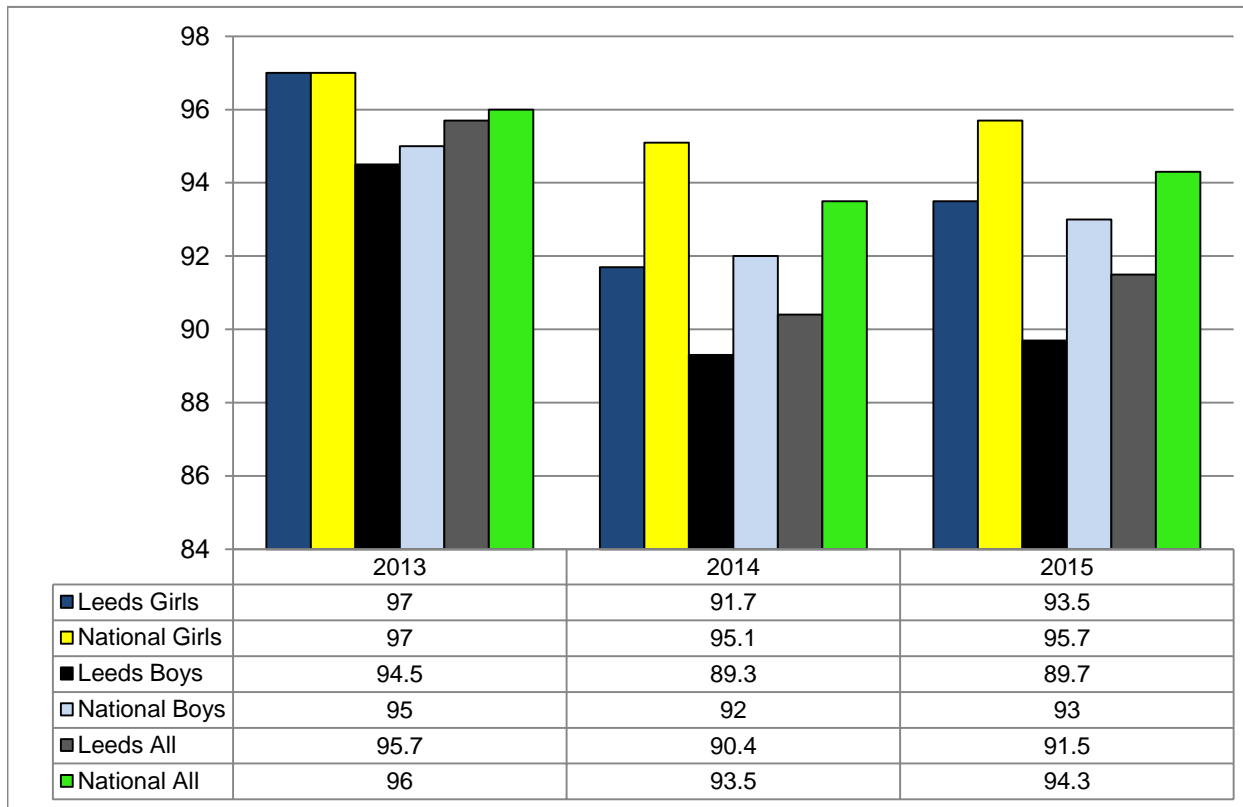
Data Status: Final

Data Source: DfE Statistical First Release SFR 01 2016

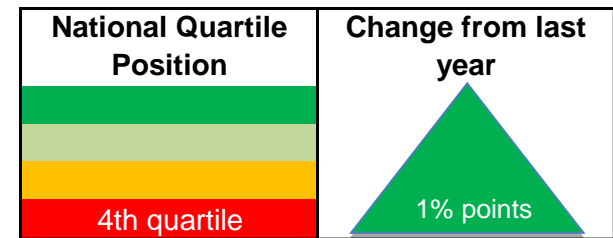
Data Notes: 2013/14 results are not comparable with previous years. Please note 2013 and 2014 data for Chinese pupils is suppressed.



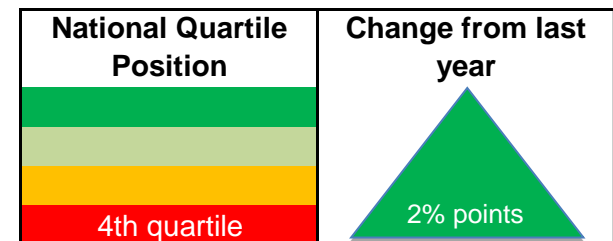
2013-14, Key Stage 4 - Percentage of pupils achieving 5 A*-G at GCSE - Gender



England Rank Boys	Equal 130/152
--------------------------	---------------



England Rank Girls	Equal 140/151
---------------------------	---------------



Key Issues: Performance has improved for boys by one percentage point in 2015, however the gap remains three percentage points when compared to the national. Performance of Leeds' girls has improved by two percentage points, narrowing the gap to the national figure to two percentage points.

Data Status: Final
 Data Source: DfE Statistical First Release SFR 01 2016
 Data Notes: 2013/14 results are not comparable with previous years

